



P A T H W A Y S
博 思 會

專業治療服務

Professional Therapy Services



言語治療支援服務
Speech Therapy Support Service (STSS)



職業治療支援服務
Occupational Therapy Support Service (OTSS)

博思會 跨越學距好橋樑
Bridging the Learning Gap

BRIDGE 橋樑

詳情 Details



博思會 — 跨越學距好橋樑

博思會致力以專業及實証為本的教學方式，幫助有讀寫障礙的兒童，跨越困難，重拾學習的興趣與自信。

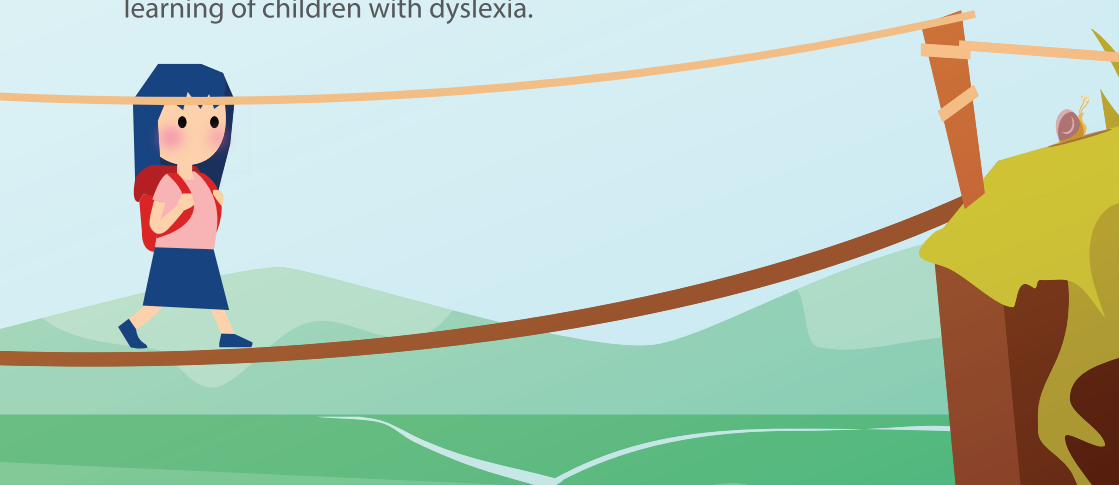
本會為註冊慈善機構，於2001成立，現於九龍及沙田設有兩間學習中心。我們擁有中、英、數及早期讀寫支援的專科教師團隊，並有多位與我們長期合作的臨床心理學家、教育心理學家、職業治療師及言語治療師作為專業夥伴，每年為數以百計的讀寫障礙學生，於課餘或校內提供適切和持續的學習支援、專業評估及治療服務。此外，本會亦定期舉辦家長講座活動，與公眾分享有關讀寫障礙的最新知識及教與學的心得。



The Pathways Foundation — Bridging the Learning Gap

The Pathways Foundation (“Pathways”) strives to help children with dyslexia to bridge the learning gap, rekindle their interest in learning, and build self-confidence through professional and evidence-based intervention programmes.

Established in 2001, we are a registered charitable organization in Hong Kong, currently operating two learning centres in Kowloon and Shatin. Our team consists of specialized subject teachers of Chinese, English, Mathematics and Early Literacy Support, as well as allied professionals including clinical psychologists, educational psychologists, occupational therapists and speech therapists. They collaborate to serve hundreds of students with dyslexia each year through individualized and continued after-school or in-school intervention programmes, along with professional assessments and therapy services. In addition, we organize regular parent seminars and activities to share with the public current knowledge on reading difficulties, and insights into the teaching and learning of children with dyslexia.



SERVICES 服務

詳情 Details



言語治療支援服務 Speech Therapy Support Service (STSS)

言語治療目的為改善學前、小學及中學學生之言語溝通及社交能力，使其能符合智齡或年齡的水平。本會之資深言語治療師，因應學生的個別需要，評估學生的語言理解、口語表達能力、構音發展、口肌功能及社交能力等，然後訂定適當的訓練目標，透過不同活動，提升他們的能力。同時，我們亦為家長提供家居訓練，促進學生的言語發展。



Our experienced speech therapist offers individualized, tailor-made treatment to improve the social and communication skills for students of kindergarten, primary and secondary schools. An assessment will be conducted on the child's comprehension, expression, articulation, oromotor and social skills, after which an individualized treatment plan will be designed. A variety of activities will be used to improve the social and communication abilities of the child. In addition, we also provide training to parents on practices that can assist the speech development of their children at home.



職業治療支援服務

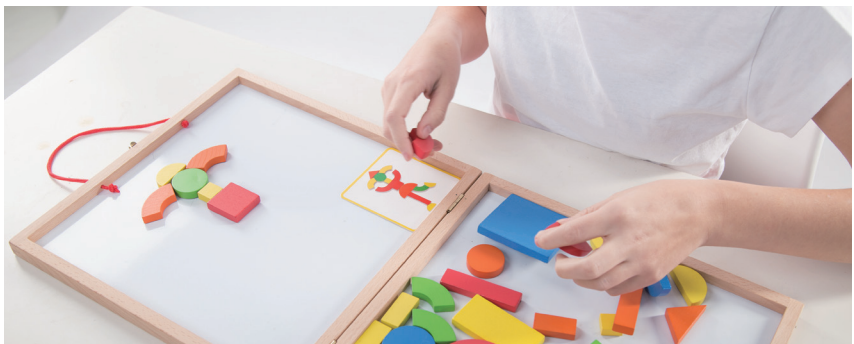
Occupational Therapy Support Service (OTSS)



職業治療師透過標準性評估工具及臨床觀察，了解學生在書寫手部功能和視覺感知能力的強項及弱項，從而設計合適的訓練計劃及提供調適。本服務由資深註冊職業治療師，針對學生在學習上遇到的困難，提供多項專業服務，包括幼兒小手肌及書寫能力評估及中學生書標準性書寫能力評估，

以及提升學生書寫能力或執行功能的訓練。此外，博思會職業治療師亦可與學校合作，提供到校學生服務，或舉行家長及教師講座及培訓。

Through the use of standardized assessment tools and clinical observation, an occupational therapist studies the strengths and weaknesses of a student's handwriting, fine motor and visual perception skills in order to design suitable training plans and provide accommodation catered to their individual needs. Focusing on the learning difficulties faced by our students, our senior registered occupational therapist offers professional assessment of the fine motor and handwriting abilities in children and the handwriting skills for secondary students, and provides training support to improve their handwriting skills and executive function. In addition, our occupational therapist can also work with schools to provide service to students on campus, or arrange workshops and training for parents and teachers.



FAQ 問題

有言語或書寫困難的學前兒童，可否接受博思會言語治療師或職業治療師的評估？

可以。學前兒童的言語能力明顯落後，或書寫時小手肌出現困難，這有可能是早期學習困難徵狀之一，並有機會日後發展成為讀寫障礙或發展協調障礙。若家長發現子女出現以上情況，建議可接受博思會言語治療師或職業治療師的評估及支援。

一般言語治療及職業治療訓練需要多久時間才見成效？

由於訓練是針對學生的個別需要，透過各種活動、遊戲及玩具來達致不同訓練目標，故此每位學生的步伐也有所不同。不過，持續性訓練和家長的配合均相當重要，除了專業支援外，治療師也會提供家課給家長，讓他們能夠在家協助子女鞏固技巧和學習策略。

患有言語障礙的孩子的表徵是甚麼？

若孩子的口語表達能力明顯較同齡兒童為弱，詞彙不足且句子欠組織，同時理解能力有困難，經常不明白指令等，建議家長考慮安排孩子進行言語治療評估。

學生可否以「香港中學生標準性書寫能力評估」報告，作為申請香港中學文憑試 (HKDSE)調適之用？

可以。不過，除了呈交此項評估報告外，學生亦需提供證明因其寫字速度緩慢而已獲學校安排相關調適，考評局才會接受結果及提供特別考試安排。

Can a preschool child with language or fine motor problems be assessed by Pathways' Speech Therapist or Occupational Therapist?

Yes. The obvious lag in speech ability, and the existence of fine motor problems during writing, can be early symptoms of learning difficulties which may evolve into dyslexia or developmental coordination disorder in the future. If parents notice that their child is showing such symptoms, it would be advisable for them to arrange an assessment and obtain support from Pathways' Speech Therapist or Occupational Therapist.

How long does it normally take for training in speech therapy and occupational therapy to be effective?

Since training is tailored to the individual needs of students through the use of various activities, games and toys to achieve a variety of training goals, the pace will vary for each student. However, the continuity of training and the cooperation from parents are crucial. In addition to their professional support, our therapists will also provide homework to parents, so that they can help their children to reinforce the skills and learning strategies at home.

What are the symptoms of children with speech impairment?

If a child is showing apparently weaker verbal expression ability than that of children of the same age, insufficiency in vocabulary and inability to structure sentences, difficulty in comprehension and failure to understand instructions, parents are advised to arrange speech therapy assessment for the child.

Can a student use the report from the "Handwriting Assessment for Secondary School Students" to request for special arrangements at the Hong Kong Diploma of Secondary Education (HKDSE) examination?

Yes. However, in addition to the assessment report, the student must also present proof of having received prior accommodations for his/her slow writing speed at school in order for the request to be accepted, and special examination arrangements to be provided by the Hong Kong Examination and Assessment Authority (HKEAA).



P A T H W A Y S

博 思 會

需要接受專業治療服務嗎？若您的孩子有言語或書寫困難，歡迎與我們聯繫。

Seeking professional therapy services?
Please talk to us if you find that your child is facing language or handwriting problems.

聯絡我們
CONTACT US



博思會學習中心（九龍）

Pathways Foundation Learning Centre (Kowloon)

九龍旺角新填地街470號海島中心一樓1-3室
Unit 1-3, 1/F, Island Centre, 470 Reclamation Street
Mong Kok, Kowloon

T : 2870 1377

F : 2870 1779

博思會學習中心（沙田）

Pathways Foundation Learning Centre (Shatin)

新界沙田顯徑邨顯富樓地下
G/F, Hin Fu House, Hin Keng Estate, Shatin, N.T.

T : 3105 2311

F : 3105 1414

www.pathways.org.hk
info@pathways.org.hk
www.facebook.com/pathwayshk
www.instagram.com/thepathwaysfoundation

港鐵顯徑站現已開通，來往更方便！

前往A出口
向巴士總站方向直上，步行約3分鐘

MTR Hin Keng Station is now open!

Go to Exit A
About a 3-minute walk up after the bus terminal



會員機構 Member of



報名表格
Application Form



收費表
Tariff Table

