



讀寫障礙

10% 人面對的困難

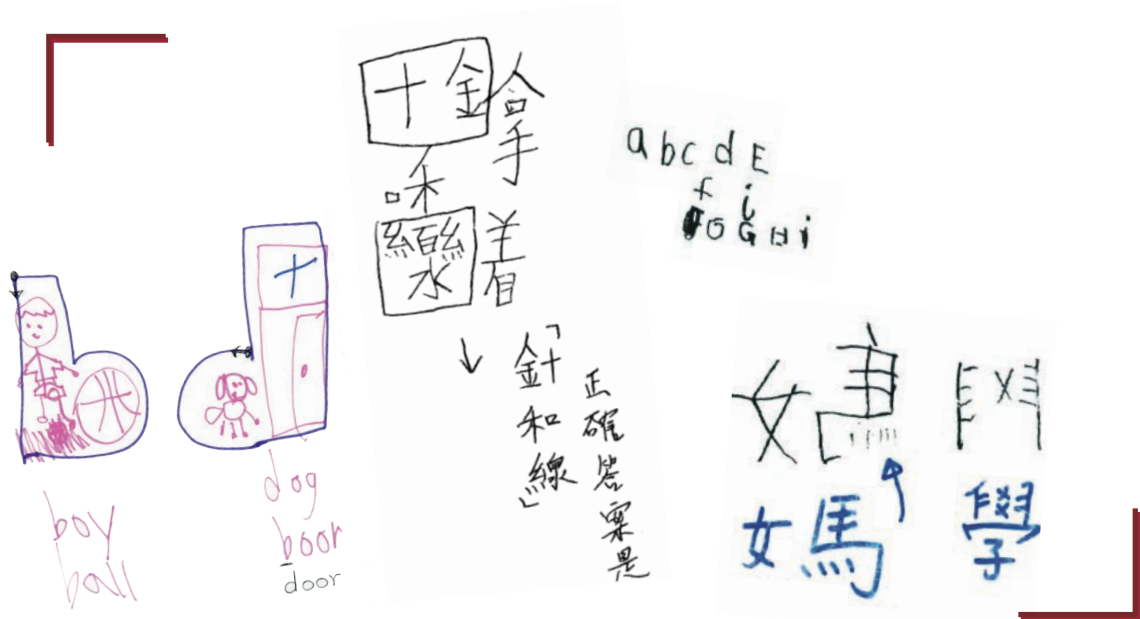
DYSLEXIA
affecting
1 in 10



博思會 跨越學距好橋樑
Bridging the Learning Gap

何謂讀寫障礙？

WHAT IS DYSLEXIA ?



讀寫障礙（又稱讀寫困難）是一種常見的特殊學習困難，泛指閱讀、書寫或拼字方面的障礙，其成因是與神經系統發展異常有關，而非因學習環境不良所引致。這類學生雖然具有常規的學習經驗和正常的智力，但是在辨識文字方面卻遇上很大困難，從而出現閱讀理解和寫作上的問題。

Dyslexia is a common specific learning difficulty, generally referring to difficulties in reading, writing and spelling. It is a learning difficulty that is neurobiological in origin and not caused by a poor learning environment. Students with dyslexia have a regular learning experience and normal intelligence. However they encounter great difficulty in word recognition, which leads to problems in reading comprehension and writing.

BRIDGE 橋樑

了解更多
More Details



博思會 — 跨越學距好橋樑

博思會致力以專業及實證為本的教學方式，幫助有讀寫障礙的兒童，跨越困難，重拾學習的興趣與自信。

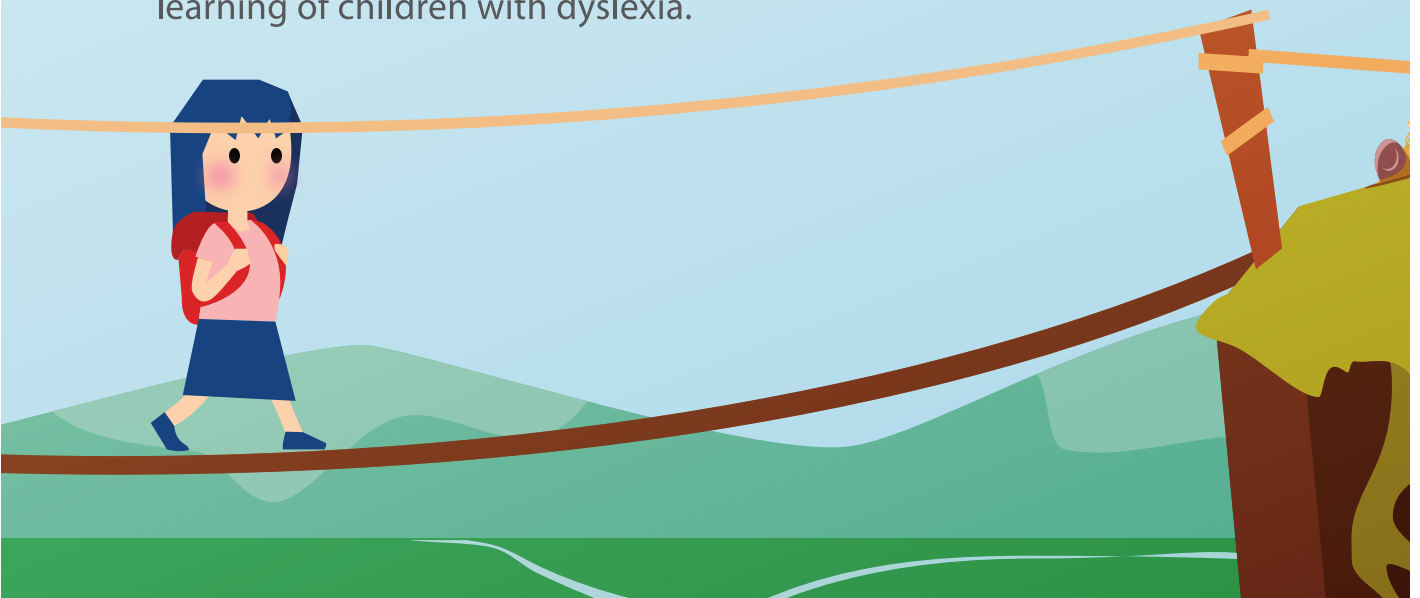
本會為註冊慈善機構，於2001年成立，現於九龍及沙田設有兩間學習中心。我們擁有中、英、數及早期讀寫支援的專科教師團隊，並有多位與我們長期合作的臨床心理學家、教育心理學家、職業治療師作為專業夥伴，每年為數以百計的讀寫障礙學生，於課餘或校內提供適切和持續的學習支援、專業評估及治療服務。此外，本會亦定期舉辦家長講座活動，與公眾分享有關讀寫障礙的最新知識及教與學的心得。



The Pathways Foundation — Bridging the Learning Gap

The Pathways Foundation (“Pathways”) strives to help children with dyslexia to bridge the learning gap, rekindle their interest in learning, and build self-confidence through professional and evidence-based intervention programmes.

Established in 2001, we are a registered charitable organization in Hong Kong, currently operating two learning centers in Kowloon and Shatin. Our team consists of specialized subject teachers of Chinese, English, Mathematics and Early Literacy Support, as well as allied professionals including clinical psychologists, educational psychologists, occupational therapists and speech therapists. They collaborate to serve hundreds of students with dyslexia each year through individualized and continued after-school or in-school intervention programmes, along with professional assessment and therapy services. In addition, we organize regular parent seminars and activities to share with the public current knowledge on reading difficulties, and insights into the teaching and learning of children with dyslexia.



SERVICES 服務

專業甄別及評估服務 Professional Screening & Assessment Services

博思會提供不同專業甄別及評估服務，家長可按其需要選擇由臨床心理學家、教育心理學家或經驗老師主理評估或測驗，以了解孩子讀寫障礙的狀況，從而尋求適當的支援。

The team of professionals at Pathways, including clinical psychologists, educational psychologists and experienced subject teachers, provide different kinds of assessment and screening services. By knowing their child's status of dyslexia, parents can seek for appropriate professional help.

- 學前及小學讀寫障礙甄別測驗服務 (KPSS)
Kindergarten & Primary Screening Service
- 教育心理學支援服務 (EPSS)
Educational Psychology Support Service
- 臨床心理學支援服務 (CPSS)
Clinical Psychology Support Service

了解更多
More Details



學習支援服務 Learning Support Services

博思會老師們通過系統化及多感官的教學方法，為幼稚園及中小學的讀寫障礙學生提供中、英、數專科的課餘學習支援。教學內容因應學生的能力而設計，有助學生掌握學習方法和建立自信。博思會亦會在假期期間開辦暑期、親子等短期課程，讓學生善用餘暇，鞏固基礎。此外，我們亦定期舉辦家長教育講座及工作坊，以提升公眾對讀寫障礙認識與接納。

Through a systematic and multi-sensory approach, teachers at Pathways provide after school learning support to students from kindergarten, primary to secondary schools. Teaching plans are made to suit the ability of each individual student, helping them to master learning techniques and build confidence. During holidays we offer short courses, such as summer courses or parent-child courses, so that students can strengthen their foundation. We also regularly organize seminars and workshops for parents, raising public awareness and acceptance towards dyslexia.

- 早期讀寫支援計劃 (ELSP)
Early Literacy Support Programme
- 課餘支援計劃 (ASSP)
After School Support Programme
- 暑期課程及短期課程
Summer Programme & Short Courses
- 家長教育講座及工作坊
Parent Education Seminars & Workshops

了解更多
More Details



專業治療服務

Professional Therapy Services

博思會的专业夥伴，可為學前、小學及中學學生提供個別專業治療及訓練服務，包括職業治療師提升學生書寫能力或執行功能，及言語治療師改善學生的言語溝通及社交能力，幫助學生跨越學習困難。

Pathways' allied team of professionals provide individualized therapy and training services to kindergarten, primary or secondary students; our occupational therapist improves students' handwriting skills and executive functions, and our speech therapist better their social and communication skills, helping these students overcome their learning difficulties.

- 言語治療支援服務 (STSS)
Speech Therapy Support Service
- 職業治療支援服務 (OTSS)
Occupational Therapy Support Service



了解更多
More Details

學校支援服務

School Support Services

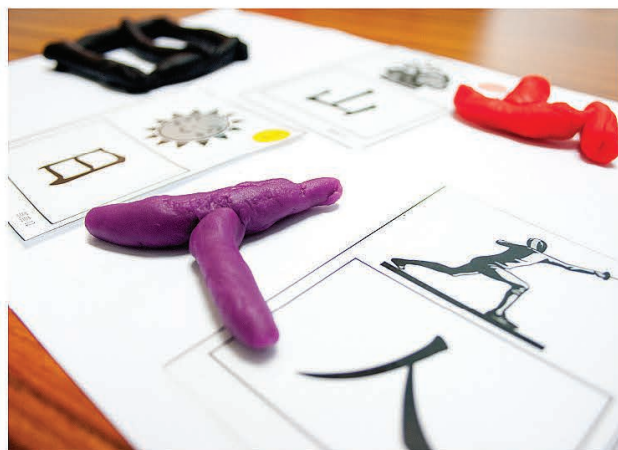
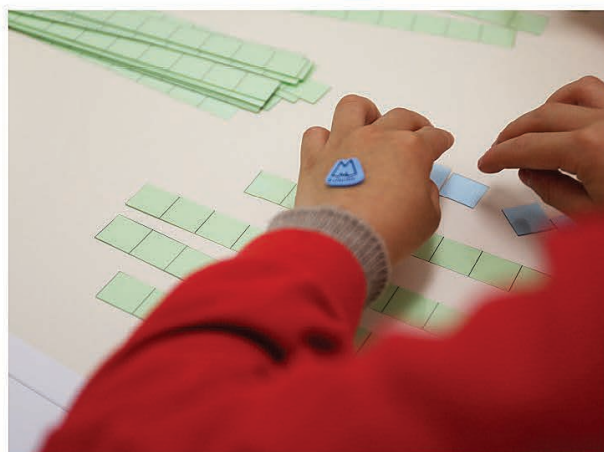
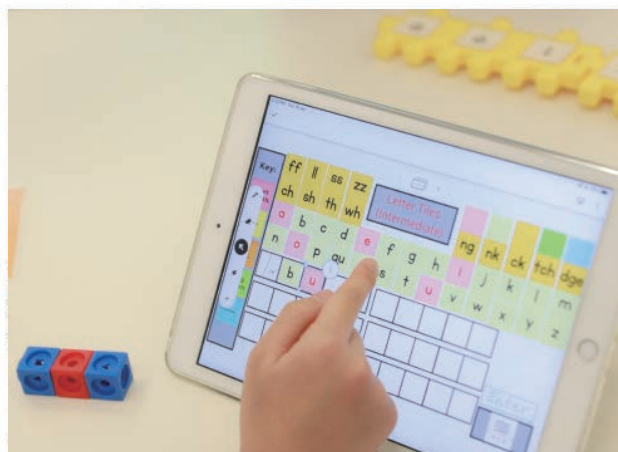
作為專門服務讀寫障礙兒童的機構，博思會致力與幼稚園、小學及中學學校緊密合作，提供到校支援讀寫障礙學生服務。我們亦積極與學校合作舉辦專題講座及工作坊，加強老師及家長對讀寫障礙認識，並幫助他們了解相關的支援方法。

With a mission to serve children with dyslexia, Pathways collaborates with schools from kindergarten, primary to secondary levels to provide in-school support service to students with reading and writing difficulties. We also hold topical seminars and workshops to enhance teachers' and parents' understanding of dyslexia, helping them know more about relevant support methods.

- 校本支援計劃 (ISSP)
In-school Support Programme
- 教師培訓
Teacher Training
- 家長教育
Parent Education

了解更多
More Details





ONE-MINUTE 一分鐘

立即測試
Test now



讀寫障礙表徵快檢*

Quick Review for
Symptoms of Dyslexia*#

你的子女有讀寫障礙傾向嗎？

博思會網站中「一分鐘讀寫障礙表徵快檢」內列出讀寫障礙傾向最常見的表徵，家長可先行檢閱孩子有否出現類似情況，並留下聯絡資料，讓我們與您聯繫，為您分憂及早找出解決方案。

*非標準測試，只供初步了解。

Is Your Child At Risk of Dyslexia?

The "One-Minute Quick Review for Symptoms of Dyslexia" on Pathways' website lists the most common symptoms found in children at risk of dyslexia. You are welcome to go through the list and see if your child shares any of the characteristics. Feel free to contact us if you would like us to help you work out a best solution for your child.

* This is only for initial understanding and is by no means a standard assessment tool.

The review is available in Chinese only.

VOICES 心聲

多謝博思會提供**學校以外的機會**給學障孩子。他們的路確實難行，幸好有你們專業的輔導沿途協助。**看到孩子進步，感恩、感謝、感激!**

Thanks to Pathways for **providing learning opportunities outside of school** to children with specific learning difficulties. The path for them is difficult, but we are fortunate to have your professional guidance along the way. **It's great to see my child making progress, thank you so much!**

景毅媽媽 Matthew's mother

感謝老師這一年來的教導，非常包容亞仔的情緒起伏，**悉心教導**，這一年英文也有**明顯進步**，來年也希望可跟老師一起努力！

Thank you teacher for your work over the past year, you were very accommodating to the emotional ups and downs of my son, and taught him **with great care and support**. My son has made **significant improvement** in his English this year. We look forward to learning with you again in the coming year!

建竣媽媽 Kin Tsun's mother

感謝博思會對嘉希的教導，他已經參加了六年，而我們亦**一直見證他的進步**。多謝每一位教導過他的老師，**感謝你們的耐心及對他在學習上的啟發!**

Thank you to Pathways for teaching Ka Hei. For six years he has been attending classes here, and we've **witnessed his improvement along the way**. To all the teachers who have taught him, **thank you for your patience and inspiration** to our son!

嘉希家長 Ka Hei's parents

感謝您們對Roselyn的照顧和關心。她獨特的情況，需要更加個別的關注。您們應對這些挑戰的**耐心和技巧，確實是非常出色**。為全體博思會的老師送上熱烈的掌聲！

Thank you for your special care and attention to Roselyn. She has unique conditions which requires special attention, and you've demonstrated the **patience and skills** to combat these challenges, that's **truly exceptional**. A great round of applause to all your teachers!

Roselyn 媽媽 Roselyn's mother



P A T H W A Y S

博 思 會

需要專業意見嗎？若您的孩子遇到
讀寫困難，歡迎與我們聯繫。

Seeking professional advice? Please talk
to us if you find that your child is facing
reading and writing difficulties.

聯絡我們
CONTACT US



博思會學習中心（九龍）

Pathways Foundation Learning Centre (Kowloon)

1/F, Island Centre, 470 Reclamation Street,
Mong Kok, Kowloon
九龍旺角新填地街470號海島中心一樓1-3室

T : 2870 1377

F : 2870 1779

博思會學習中心（沙田）

Pathways Foundation Learning Centre (Shatin)

G/F, Wing A (Partial), Hin Fu House, Hin Keng Estate,
Tai Wai, Shatin, N.T.

新界沙田大圍顯徑邨顯富樓A翼(部份)地下

T : 3105 2311

F : 3105 1414

 www.pathways.org.hk

 info@pathways.org.hk

    博思會

港鐵顯徑站直達，方便來往！

前往A出口，步行約5分鐘

MTR Hin Keng Station is now open!

5-minute walk from Exit A



會員機構 Member of



捐助我們
BE OUR DONOR



成為義工
BE OUR VOLUNTEER



註冊慈善機構號碼 Registered Charitable Institution No. 91/6189